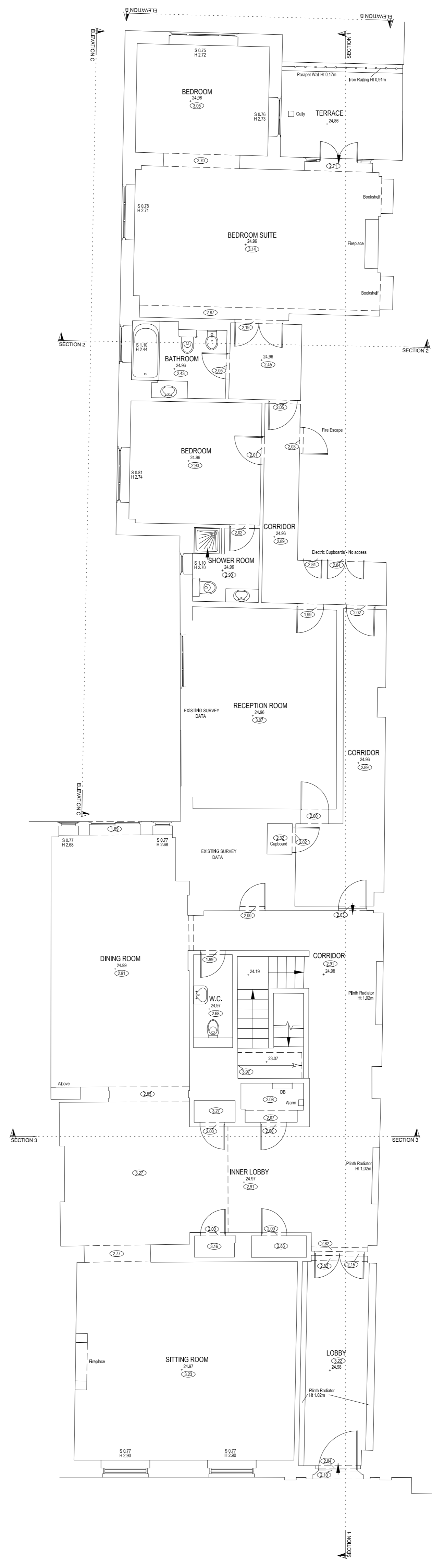


LOWER GROUND



UPPER GROUND

Orientation

Grid Plan co-ordinates relate to a local survey grid coincident with OS National Grid. SF = 1 applied at Station 2

Levels Levels relate to OS Newlyn datum by multiple RTK GNSS observations. Station 2 used, value given = 24.289m

Notes:

Legend

AB	Air Brick	I/R	Iron Railings
B	Bollard	Lt	Light
C/B	Close Boarded	P	Post
CH	Chill to Head	Pe	Pipe
C/L	Chain Link	P/R	Post & Rail
Col.	Column	P/W	Post & Wire
Cpd	Cupboard	RD	Roller Door
CR	Crown Level	RE	Rodding Eye
DH	Door Height	RWP	Rainwater Pipe
Dr	Drain	SD	Sliding Doors
FE	Fire Exit	S	Sill Height
FC	Floor to Cill	SP	Spring Point
FL	Floor Level	SVP	Soil & Vent Pipe
FW	Foul Water	SW	Surface Water
MH	Manhole	US	Underside
G	Gully	UTL	Unable To Lift
H	Window Head Ht	VP	Vent Pipe
IC	Inspection Chamber	Vt	Vent
IL	Invert Level	WT	Water Tap

(2.70) Floor to Ceiling Ht (F2.70) False Ceiling Ht
 Mains Point Stairs/Steps (UP)
 Blank Plate Isolator Switch
 Light Water Stop Tap
 Strip Light Overhead Features
 Switch Jost Span Direction
 Pendant Switch Sloping Ceiling (Up)

Key:

A	Issue	14.10.15	KP
Rev No./Revision Note	Date	Signed	
1	5	10	

RICS

13 Brompton Lane
Northampton
NN1 7JH
Tel: 01504 582200
www.aimcon.co.uk

AIMCON SURVEYS

TOPOGRAPHICAL SURVEYS MEASURED BUILDINGS SURVEYS
ENGINEERING SURVEYS & SETTING OUT BOUNDARY DISPUTES

Client -

Title Measured Building Survey

Site
Mayfair, London
W1K

Surveyed KP/RB Date -
Sheet No 4 of 5 Scale 1/100 @ A1

Dwg No. - Rev. A